

Restore your vitality
with **Flüent**



TECHNICAL SPECIFICATIONS

- > SonicEnergy: 1.0MHz
- > Pulsed Frequency: 100Hz
- > Duty Cycle 10% to 100%
- > Waveform: Continuous/Pulsed
- > Effective Radial Area: 5cm²
- > Max. Effective Intensity 1.6W/cm²
- > Preheat Time: Less Than 2 min.
- > Treatment Duration: <30 min.
- > FDA Product Code: ISA

Clinical References

Cui W, Li H, Guan R, et al. Efficacy and safety of novel low-intensity pulsed ultrasound (LIPUS) in treating mild to moderate erectile dysfunction: a multicenter, randomized, double-blind, sham-controlled clinical study. *Transl Androl Urol.* 2019;8(4):307-319doi:10.21037/tau.2019.07.03

Jiang X, Savchenko O, Li Y, et al. A Review of Low-Intensity Pulsed Ultrasound for Therapeutic Applications. *IEEE Trans Biomed Eng.* 2019;66(10):2704-2718. doi:10.1109/TBME.2018.2889669



www.fluentproducts.com

Individual results may vary. Neither Flüent nor any of its subsidiaries dispense medical advice. The content of this catalog does not constitute FDA approval, medical, legal, or any other professional advice.



THERAPEUTIC ULTRASOUND +



EDX FOR MEN



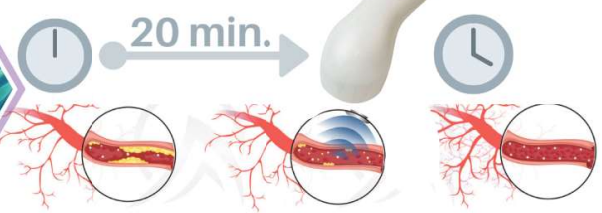
REGENERATIVE + TECHNOLOGY



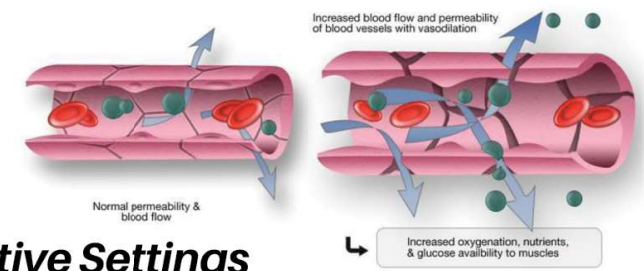
EDX



How It Works



Vasodilation



LCD SCREEN

CONVENIENT SIZE

5 KEY CONTROL

AN EFFECTIVE ALTERNATIVE FROM THE PRIVACY OF YOUR OWN HOME

Physical Effects of Pulsed Ultrasound

Your EDX is a therapeutic ultrasound wave device that generates deeply penetrating heat through ultrasound energy. The pulse waves travel deep into the tissue and induce vasodilation, which helps increase blood flow to the treated area and is found to help restore your vitality faster.

Key Benefits

- > Clinically Proven Results
- > Accelerated Healing
- > Drug & Surgery Free

“Amazing results after the first use!
I felt like I was 37 not 67!! Thank You!!
My EDX has been a game-changer.
Al G., Minneapolis, Mn.”



Smart + Intuitive Settings

One Device = Multiple Applications

Treatment Recommendations

EDX therapy for erectile dysfunction should be repeated daily to provide oxygen, nutrients and growth factors necessary for restoration.

- 1 SET DEVICE FOR TREATMENT**
Program the EDX Ultrasound device with the provided settings: Power Level, Duty Cycle, and Time
Energy 0.5-8 Watts | Duty Cycle 10-100% | Timer 1-15 Minutes
- 2 APPLY GEL**
Place ultrasound gel (or approved alternative) to treatment areas, including left and right corpus cavernosum;
Optional additional areas are left and right crus between legs.
- 3 START THERAPY**
Press EDX metal applicator against each treatment area for 5 minutes and slowly glide across entire region.